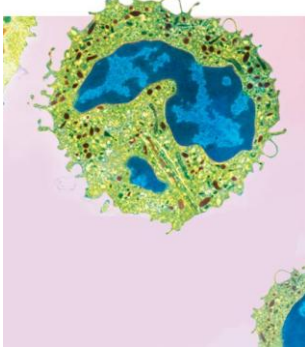


7-3 Cell Boundaries



Slide 1 of 47

7-3 Cell Boundaries → Cell Membrane

All cells are surrounded by a thin, flexible barrier known as the **cell membrane**.

Many cells also produce a strong supporting layer around the membrane known as a **cell wall**.

Slide 2 of 47

7-3 Cell Boundaries → Cell Membrane

Cell Membrane

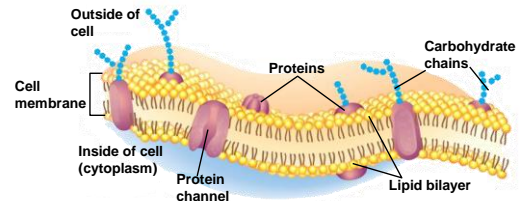


The cell membrane regulates what enters and leaves the cell and also provides protection and support.

Slide 3 of 47

7-3 Cell Boundaries → Cell Membrane

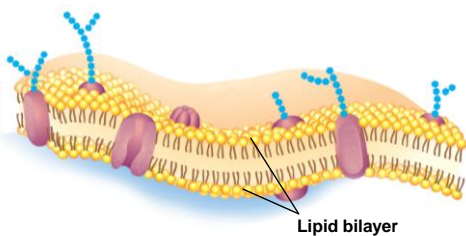
Cell Membrane



Slide 4 of 47

7-3 Cell Boundaries → Cell Membrane

The composition of nearly all cell membranes is a double-layered sheet called a **lipid bilayer**.



Slide 5 of 47

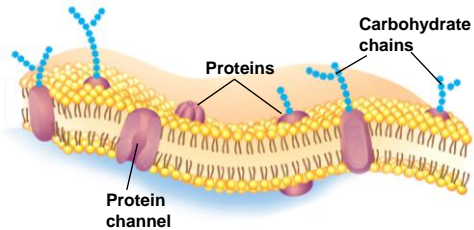
7-3 Cell Boundaries → Cell Membrane

The lipid bilayer gives cell membranes a flexible structure that forms a barrier between the cell and its surroundings.

Slide 6 of 47

7-3 Cell Boundaries → Cell Membrane

Most cell membranes contain protein molecules embedded in the lipid bilayer, some of which have carbohydrate molecules attached to them.



Slide 7 of 47

7-3 Cell Boundaries → Cell Walls



The main function of the cell wall is to provide support and protection for the cell.

Slide 8 of 47

7-3 Cell Boundaries → Cell Walls

Cell Walls

Cell walls are found in plants, algae, fungi, and many prokaryotes.

The cell wall lies outside the cell membrane.

Most cell walls are porous enough to allow water, oxygen, carbon dioxide, and certain other substances to pass through easily.

Slide 9 of 47

7-3 Cell Boundaries → Diffusion Through Cell Boundaries

Diffusion Through Cell Boundaries

Every living cell exists in a liquid environment.

The cell membrane regulates movement of dissolved molecules from the liquid on one side of the membrane to the liquid on the other side.

Slide 10 of 47

7-3 Cell Boundaries → Diffusion Through Cell Boundaries

Measuring Concentration

A solution is a mixture of two or more substances.

The substances dissolved in the solution are called solutes.

The **concentration** of a solution is the mass of solute in a given volume of solution, or mass/volume.

Slide 11 of 47

7-3 Cell Boundaries → Diffusion Through Cell Boundaries

Diffusion

Particles in a solution tend to move from an area where they are more concentrated to an area where they are less concentrated.

This process is called **diffusion**.

When the concentration of the solute is the same throughout a system, the system has reached **equilibrium**.

Slide 12 of 47

7-3 Cell Boundaries ➔ Diffusion Through Cell Boundaries

active art
click to start

Solute

Cell Membrane

PEARSON Prentice Hall

Slide 13 of 47

7-3 Cell Boundaries ➔ Diffusion Through Cell Boundaries

Solute

A

PEARSON Prentice Hall

Slide 14 of 47

There is a higher concentration of solute on one side of the membrane as compared to the other side of the membrane.

7-3 Cell Boundaries ➔ Diffusion Through Cell Boundaries

B

PEARSON Prentice Hall

Slide 15 of 47

Solute particles move from the side of the membrane with a higher concentration of solute to the side of the membrane with a lower concentration of solute. The solute particles will continue to diffuse across the membrane until equilibrium is reached.

7-3 Cell Boundaries ➔ Diffusion Through Cell Boundaries

C

PEARSON Prentice Hall

Slide 16 of 47

When equilibrium is reached, solute particles continue to diffuse across the membrane in both directions.

7-3 Cell Boundaries ➔ Diffusion Through Cell Boundaries

Diffusion depends upon random particle movements. Therefore, substances diffuse across membranes without requiring the cell to use energy.

PEARSON Prentice Hall

Slide 17 of 47

7-3 Cell Boundaries ➔ Osmosis

Osmosis

Osmosis is the diffusion of water through a selectively permeable membrane.

PEARSON Prentice Hall

Slide 18 of 47

7-3 Cell Boundaries → Osmosis

active art
click to start

How Osmosis Works

Concentrated sugar solution (Water less concentrated)

Dilute sugar solution (Water more concentrated)

Sugar molecules

Selectively permeable membrane

Movement of water

Slide 19 of 47

PEARSON Prentice Hall Copyright Pearson Prentice Hall

7-3 Cell Boundaries → Osmosis

Water tends to diffuse from a highly concentrated region to a less concentrated region.

If you compare two solutions, the more concentrated solution is **hypertonic** (“above strength”).

The more dilute solution is **hypotonic** (“below strength”).

Slide 20 of 47

PEARSON Prentice Hall Copyright Pearson Prentice Hall

7-3 Cell Boundaries → Osmosis

When concentrations of solutions are the same on both sides of a membrane, the solutions are **isotonic** (“same strength”).

Slide 21 of 47

PEARSON Prentice Hall Copyright Pearson Prentice Hall

7-3 Cell Boundaries → Osmosis

Osmotic Pressure

Osmosis exerts a pressure known as osmotic pressure on the hypertonic side of a selectively permeable membrane.

Slide 22 of 47

PEARSON Prentice Hall Copyright Pearson Prentice Hall

7-3 Cell Boundaries → Osmosis

Because the cell is filled with salts, sugars, proteins, and other molecules, it will almost always be hypertonic to fresh water.

If so, the osmotic pressure should produce a net movement of water into the cell. As a result, the volume of the cell will increase until the cell becomes swollen or bursts.

Slide 23 of 47

PEARSON Prentice Hall Copyright Pearson Prentice Hall

7-3 Cell Boundaries → Osmosis

Cells in large organisms are not in danger of bursting because they are bathed in fluids, such as blood, that are isotonic.

Other cells are surrounded by tough cell walls that prevent the cells from expanding even under tremendous osmotic pressure.

Slide 24 of 47

PEARSON Prentice Hall Copyright Pearson Prentice Hall

7-3 Cell Boundaries ➔ Facilitated Diffusion

Facilitated Diffusion

Cell membranes have protein channels that act as carriers, making it easy for certain molecules to cross.

Slide
25 of 47

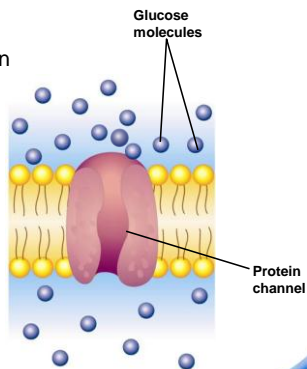
7-3 Cell Boundaries ➔ Facilitated Diffusion

The movement of specific molecules across cell membranes through protein channels is known as **facilitated diffusion**.

Hundreds of different protein channels have been found that allow particular substances to cross different membranes.

Slide
26 of 47

7-3 Cell Boundaries ➔ Facilitated Diffusion

Facilitated DiffusionSlide
27 of 47

7-3 Cell Boundaries ➔ Facilitated Diffusion

Although facilitated diffusion is fast and specific, it is still diffusion.

Therefore, facilitated diffusion will only occur if there is a higher concentration of the particular molecules on one side of a cell membrane as compared to the other side.

Slide
28 of 47

7-3 Cell Boundaries ➔ Active Transport

Active Transport

Sometimes cells move materials in the opposite direction from which the materials would normally move—that is against a concentration difference. This process is known as **active transport**.

Active transport requires energy.

Slide
29 of 47

7-3 Cell Boundaries ➔ Active Transport

Molecular Transport

In active transport, small molecules and ions are carried across membranes by proteins in the membrane.

Energy use in these systems enables cells to concentrate substances in a particular location, even when diffusion might move them in the opposite direction.

Slide
30 of 47

7-3 Cell Boundaries ➔ Active Transport

active art
click to start

Active Transport

Molecule to be carried

Energy

PEARSON Prentice Hall

Slide 31 of 47

7-3 Cell Boundaries ➔ Active Transport

Endocytosis and Exocytosis

Large molecules and even solid clumps of material may undergo active transport by means of the cell membrane.

Endocytosis is the process of taking material into the cell by means of infoldings, or pockets, of the cell membrane.

The pocket breaks loose from the outer portion of the cell membrane and forms a vacuole within the cytoplasm.

PEARSON Prentice Hall

Slide 32 of 47

7-3 Cell Boundaries ➔ Active Transport

Two examples of endocytosis are:

- phagocytosis
- pinocytosis

PEARSON Prentice Hall

Slide 33 of 47

7-3 Cell Boundaries ➔ Active Transport

In **phagocytosis**, extensions of cytoplasm surround a particle and package it within a food vacuole. The cell then engulfs it.

Phagocytosis requires a considerable amount of energy.

PEARSON Prentice Hall

Slide 34 of 47

7-3 Cell Boundaries ➔ Active Transport

In **pinocytosis**, tiny pockets form along the cell membrane, fill with liquid, and pinch off to form vacuoles within the cell.

PEARSON Prentice Hall

Slide 35 of 47

7-3 Cell Boundaries ➔ Active Transport

Exocytosis

Many cells also release large amounts of material from the cell, in a process called exocytosis.

During **exocytosis**, the membrane of the vacuole surrounding the material fuses with the cell membrane, forcing the contents out of the cell.

PEARSON Prentice Hall

Slide 36 of 47


7-3 Section QUIZ

Continue to:

Section QUIZ

- Or -

Click to Launch:



PEARSON
Prentice
Hall

Slide
37 of 47

Copyright Pearson Prentice Hall

7-3 Section QUIZ

1 Unlike a cell wall, a cell membrane

A a. is composed of a lipid bilayer.

b. provides rigid support for the surrounding cell.

c. allows most small molecules and ions to pass through easily.

d. is found only in plants, fungi, algae, and many prokaryotes.

PEARSON
Prentice
Hall

Slide
38 of 47

Copyright Pearson Prentice Hall

7-3 Section QUIZ

2 The concentration of a solution is defined as the

a. volume of solute in a given mass of solution.

A b. mass of solute in a given volume of solution.

c. mass of solution in a given volume of solute.

d. volume of solution in a given mass of solute.

PEARSON
Prentice
Hall

Slide
39 of 47

Copyright Pearson Prentice Hall

7-3 Section QUIZ

3 If a substance is more highly concentrated outside the cell than inside the cell and the substance can move through the cell membrane, the substance will

a. move by diffusion from inside the cell to outside.

b. remain in high concentration outside the cell.

A c. move by diffusion from outside to inside the cell.

d. cause water to enter the cell by osmosis.

PEARSON
Prentice
Hall

Slide
40 of 47

Copyright Pearson Prentice Hall

7-3 Section QUIZ

4 The movement of materials in a cell against a concentration difference is called

a. facilitated diffusion.

A b. active transport.

c. osmosis.

d. diffusion.

PEARSON
Prentice
Hall

Slide
41 of 47

Copyright Pearson Prentice Hall

7-3 Section QUIZ

5 The process by which molecules diffuse across a membrane through protein channels is called

a. active transport.

b. endocytosis.

A c. facilitated diffusion.

d. osmosis.

PEARSON
Prentice
Hall

Slide
42 of 47

Copyright Pearson Prentice Hall